



D.5.2 Ë Second Year Report

WP5 Ë 3D Artefact Processing

Version3.5- FINAL

29 November 2010

Grant Agreement number: 231809

Project acronym: 3D-COFORM

Project title: Tools and Expertise for 3D Collection Formation

Funding Scheme: FP7

Project coordinator name,
Title and Organisation: Prof David Arnold, University of Brighton

Tel: +44 1273 642400

Fax: +44 1273 642160

E-mail: D.Arnold@brighton.ac.uk

Project website address: www.3dcoform.eu

The research leading to these results has received funding from the European Community's Seventh Framework Programme (FP7/2007) under grant agreement n° 231809.

Authors: Roberto Scopigno

Consiglio Nazionale Delle Ricerche (CNR)

Contributing partner organizations: Katholieke Universiteit Leuven (KUL)

Eidgenossische Technische Hochschule Zurich (ETHZ)

Fraunhofer Gesellschaft Zur Forderung Der Angewandten
Forschung E.V. (FHGD)

Technische Universitaet Graz (TU Graz)

Media Integration and Communication Centre, University of
Florence (MICC)

Breuckmann

Spheron

Table of Contents

1	Executive Summary.....	4
2	WP 5 3D Artefact Processing Detailed description of work.....	5
2.1	Task organization and planned work.....	6
2.2	Work performed.....	6
3	Task 5.1 Processing tools for meshed models.....	7
3.1	Activities and results in Year.2.....	7
3.2	Synthetic description of partners contributions.....	13
3.3	Deviation from work plan.....	13
3.4	Plans for the next period (adaptations to the work plan of the next period).....	14
4	Task 5.2 Methods for shape analysis.....	15
4.1	Activities and results in Year.2.....	15
4.2	Synthetic description of partners contributions.....	25
4.3	Deviation from work plan.....	25
4.4	Plans for the next period (adaptations to the work plan of the next period)..	25
5	Task 5.3 Fitting procedural models to classify acquired 3D artefacts.....	26
5.1	Activities and results in Year.2.....	26
5.2	Synthetic description of partners contributions.....	29
5.3	Deviation from work plan.....	30
5.4	Plans for the next period (adaptations to the work plan of the next period)..	30
6	Milestones.....	31
7	Conclusion.....	31
8	Publications.....	32
9	Non-public Appendix Procedural Modelling of Landmark Buildings.....	34

1 Executive Summary

This document presents the status of the work under Work Package 5 (WP5) Processing at the end of the second year of activity 3DCOFORM project.

The activities follow smoothly the original plan drafted in the project Description of Work (DoW). All planned partners are now contributing to WP5 activities (a few of them have started to be active more since the start of Year 2). The end of Year 2 was one major milestone for WP5 and 3DCOFORM project, since many beta releases of the tools were planned to be delivered on Major activities performed and results obtained in the second year are: several revisions and a progressive evolution and consolidation of the tool; delivery of the basic infrastructure for the shared analysis component; new algorithms for the completion of sampled models and for the generation of LOD representations / rendering CityEngine models; a processing pipeline for the procedural modelling of landmark buildings, that has been designed and partially implemented and tested; finally, we have revised our research plan on fitting GML models over sampled datasets.

No major problems or major deviations arose during the second project year. The activities are going to continue in Year 3 according to the plan described in the project contract.

The overall organization of the document is as follows. Section 2 gives a brief overview of the project structure, how WP5 activities and tools are located in the overall framework of the project, and relationship of WP5 components with respect to the other components developed in 3DCOFORM. Sections 3, 4 and 5 present in details the work of Year 2 and the results obtained in the three tasks of WP5. Section 6 reports on the milestones; some concluding remarks are presented in Section 7. Finally, the publications produced so far are listed in Section 8.

2 WP 5 3D Artefact Processing Detailed description of work

The 3DCOFORM framework and its components have been divided into four clusters:

1. Acquiring and Processing (A&P), encompassing the developments in WP4/WP5
2. Integrated Viewer/Browser (IVB), encompassing the developments in WP6/WP7
3. Modelling and Presenting (M&P), encompassing the developments in WP8/WP9
4. Repository Infrastructure (RI), encompassing the developments in WP3

The central topic of WP5 is *Shape processing and analysis*. On one side, transforming sampled raw data in *high quality digital representations* (i.e. all the geometric algorithms needed to process raw data and geometry-based representations); on the other side, developing a number of functionalities (segmentation, feature detection, component matching) which allow to structure the geometric data making it possible to implement more sophisticated *shape analysis* or detect *semantic correspondences* between different shapes or sections of a given model. In the latter case, an important contribution will be a methodology for turning 3D reconstructions into procedural models.

All tools will cooperate with the repository (WP3): input data will be read from the repository (retrieved) and modified models will be uploaded back (ingested, which will include storing back both geometry and provenance data).

In most cases, input data for the tools designed in WP5 are:

- ◁ raw data coming from 3D scanning devices or from ARC 3D (production of raw 3D data from images), stored in the Repository Infrastructure;
- ◁ 3D meshes of which *origin*, also stored in the Repository Infrastructure.

The Repository Infrastructure is therefore the common data source for all the components and algorithms designed and implemented in WP5. It is also the sink used by all of the WP5 components for uploading the results produced after processing the input data, enriched by *provenance metadata* that will encode the specific processing action executed over the 3D data.

The *components* to be designed and implemented in WP5 have been described in [table D3.1](#) First Year Report on WP3, Repository Infrastructure, where the reader can find a detailed description of all the inter-components interactions; functional specifications were also presented in this report.

2.1 Task organization and planned work

The activity of WP5 is subdivided into three tasks. The activities planned in the second year for the three tasks have been defined in the Description of Work (DoW) document as follows:

Task 5.1 Processing tools for meshed models

- ◁ delivery of Meshlab v. 1.3 (supporting capabilities for the management of very large dataset composed by many range maps).

Task 5.2 Methods for shape analysis

- ◁ delivery of the beta release (first basic algorithms for user driven geometric segmentation and tagging)

Task 5.3-Fitting procedural models to classify acquired 3D models

- ◁ delivery of the beta release of the fitting tools

2.2 Work performed

The work performed in the second year of activity is described in the following chapters, focusing each single task.

Since the focus of this WP is both concerning the design of algorithms and new tools, it is important to say here that the activity at the algorithmic level by its nature should follow different strategies and approaches than the system design. Not all the algorithms designed and implemented will perform at the same level of quality; some new ideas could result in being more successful than others. The decision of what solutions should then be integrated in the final system will therefore follow the results of the preliminary assessment phase. It is common in the evolutionary approach endorsed that most of the algorithms proposed will find their way in the components to be delivered but not all of them. Therefore, the activity at the algorithmic level (design, implement, assess) is preliminary to a second phase (engineering, bug fix, porting in the final system component) and will be done only for the more successful algorithmic solutions.

3 Task 5.1 Processing tools for meshbased models

3.1 Activities and results in Year 2

MeshLab

The major result in task 5.1 is the design and implementation of further extensions and consolidation of the MeshLab tool. Large sections of the MeshLab architecture were redesigned not only in order to improve tool stability and software maintenance, but also to add support towards new paradigms of use.

In particular efforts were focussed to include in MeshLab

... which are useful to fulfil a complex task. Following this new approach MeshLab filter should become a link of a functional chain defined in order to complete such a task. The result of a step in the middle of the chain will change, then all the other following links will be dynamically updated. This approach should be useful also to direct the MeshLab by the review committee (after 1 year review).

On the other hand following the usual improvement route, we have planned a set of major feature improvements of MeshLab to be implemented during the second year of the project:

- < Testing and Benchmarking: since MeshLab version 1.4 (delivery planned in Spring 2011, beta in January 2011) we started to include some form of automatic testing of all the filters and functionalities in order to improve significantly the overall robustness of the tool and to guarantee stability in performance.
- < RI infrastructure: following the evolution of the deployed version of the RI we have prototyped again the RI communication features in MeshLab
- < Texture Alignment and processing: an integrated framework for the management of images and 3D models has been introduced in v.1.3, MeshLab 2.0 (release planned in early 2011) will include the functionalities required for the registration of photographic images over sampled 3D models (image-to-geometry alignment or registration) and tools for the integration of data contained in multiple images over 3D models (texture map synthesis, super-vertex encoding).

The new versions of MeshLab delivered in Year 2 are:

- < April 30, 2010. 1.2.3
- < September 2010. 1.3 beta
- < November 2010. 1.3

New features added in MeshLab version 1.3 include

- ◁ Totally restructured view/window mechanism available
 - multiple windows of the same mesh
 - standard orthographic viewing directions (up/down/left/right),
 - copy/paste of current viewing parameters between different windows (you can even save them for later reuse...);
- ◁ A new single shared layer window replaces the old approach (that was forcing the existence of one layer for each document); the new shared layer is now relative only to the current mesh document (a mesh container that holds a set of meshes whose correlation depends on the user's requirement).
- ◁ New behaviour for filter creating meshes. Empty mesh documents are now meaningful (for example this is useful to create procedural meshes)
- ◁ New interface and behaviour for decorations in display they can have dynamic parameters.
- ◁ The isoparametrization filter is now completed and fully debugged (this filter implements the new algorithm proposed in paper [1] described in task 4.5). It allows the production of a parametrized mesh with associated texture map, offering ideal characteristics for the conversion of scanned 3D models with texture attribute to a simplified base mesh with texture mapping encoding of the four channel.
- ◁ New Radiance Scaling rendering mode (a new shader providing a visualization of curvature variations on models).

A major redesign of the MeshLab architecture was needed to port in the tool the algorithmic solutions for colour management. The new solutions devised in WP4 Artefact Acquisition by CNRS-ISTIC to manage the colour data (set of photographs acquired either by a scanning device or, better, by a standard photographic camera, with no information on the inverse mapping to the digital 3D model) are being ported to the MeshLab platform. Since MeshLab was initially designed by focusing mainly on geometry-based processing, we had to extend the system by including a number of data structures for processing images as well, and for managing the relations between images and 3D meshes. This activity is currently ongoing; a number of internal instruments and revised data structures have been already introduced in version 1.3 beta. Porting of the following algorithms is in progress: (a) automatic image geometry alignment; and (b) for the synthesis of blended maps. This porting is de facto a re-design and partial implementation of the new solutions designed by CNRS-ISTIC in WP4. Those features will be released with the new version of MeshLab (beginning 2011).

MeshLab validation / bug fixing

According to the comments and suggestions of reviewers (see the project review results), efforts were made to follow the reviewers suggestions. See some details below.

Recommendation 2 (maturing): Consolidate the software tools that are planned to be used in the centre of competence by setting up benchmarking suites and not just unitary tests (this may require additional resources).

Definitions of two categories of testing protocols have been started: one based on automatic thorough unit testing of the filtering capabilities of MeshLab and another one based on a small number of selected standard workflows based on reference datasets.

For example, some default set of range maps coming from different acquisition devices (triangulation, time-of-flight, photogrammetric) that can be used to produce a final object following a precise pipeline of processing. The previous knowledge of the quality of the result of the processing will allow us to evaluate/detect possible inaccuracies produced by the MeshLab instance.

Design is in hand to be required extensions and modification of the system to provide the features as requested by the reviewers.

Recommendation 3 (users): involve a variety of users in the training and validation of the tools. For MeshLab use an existing web-based bug tracking system and devote more efforts at treating the feedback (this may require additional resources).

MeshLab provides from the very beginning of its story a web-based bug tracking system. We decided to use the instruments provided by sourceforge.com (see at:

https://sourceforge.net/tracker/?func=browse&group_id=149444&aid=774731

More than 220 bug reports have been opened so far by external users (and treated by) CNR. Probably we have not explicitly presented at the review meeting (where the presentation was very indeed) the size and collaboration of the existing community of MeshLab users.

SourceForge.net: MeshLab: Bugs

http://sourceforge.net/tracker/?func=browse&group_id=14944&atid=774731

sourceforge FIND AND DEVELOP OPEN SOURCE SOFTWARE

Register Log In

Find Software Develop Create Project Blog Site Support About

enter keyword Search

SourceForge.net > Projects > MeshLab > Tracker > Bugs > Browse Tracker Items

MeshLab [Share](#)

Summary Files Support Develop Hosted Apps Tracker Mailing Lists Forums Code

Add new Browse

Tracker: Bugs

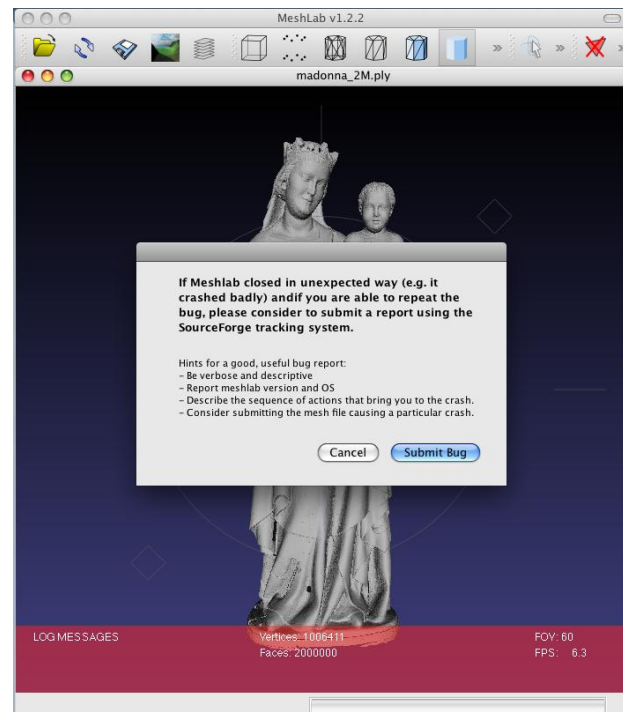
Search: Search Advanced Options RSS

Page: 1 2 3 ... 9 Next → 1 - 25 of 220 Results - Display 25

ID	Summary	Status	Opened	Assignee	Submitter	Resolution	Priority
3102949	Transparency in Multiple Layers does not work	Open	2010-11-04	nobody	nobody	None	5
3096368	Crash on Windows after closing	Open	2010-10-27	nobody	bilbauer	None	5
3095526	Compilation problem: structuresynth.pro	Closed	2010-10-26	nobody	dkolin	Fixed	5
3093561	crash on opening wavefront obj file consisting of only curve	Open	2010-10-23	nobody	nobody	None	5
3092106	MeshLab crashing	Open	2010-10-21	nobody	nobody	None	5
3091203	Linux vis-a-vis Windows	Closed	2010-10-20	nobody	nobody	Duplicate	5
3085949	Meshlab v1.3.0b: compilation under linux problem	Closed	2010-10-12	nobody	dkolin	None	5
3085943	Geometric cylindrical unwrapping uncoloured	Closed	2010-10-12	nobody	dkolin	None	5
3082841	Runtime errors	Open	2010-10-07	nobody	nobody	None	5
3081807	meshlab crashes on Windows...	Open	2010-10-06	nobody	nobody	None	5
3080621	[meshlabserver] small components selection does not work	Closed	2010-10-04	nobody	nobody	Fixed	5

This resource is also accessible directly from MeshLab

Menu MeshLab > help > submit a bug
(see figure on right side).



Many notable bugfixes have been consolidated since the delivery of version 1.2.1.

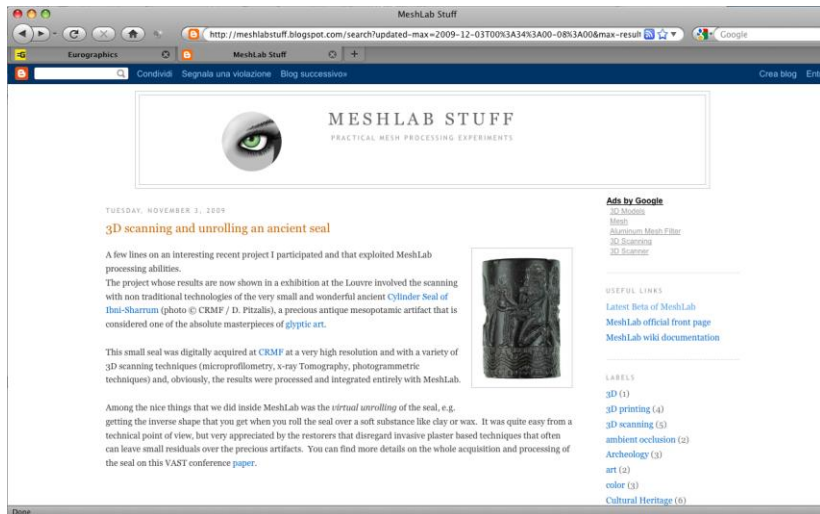
Another resource setup for MeshLab users is the MeshLab Blog

<http://MeshLabstuff.blogspot.com>

(see figure on right side).

It contains much useful information concerning new releases and how-to-do descriptions. It is obviously open to comments by the users.

It is currently visited by around 700 users per week.



New algorithmic results

The activity on the parameterization progressed. The activity related to the design and implementation of the parameterization algorithm (paper [5.1.1]) is finalized. The algorithm has been ported to MeshLab and fully debugged.

We have worked also on algorithms (a) converting triangulated meshes into meshes based on quadrilaterals (already ported to MeshLab) and (b) simplification of based meshes. The new quad based simplification algorithm has been published (see paper) and we are currently typing this code to MeshLab.

Early assessment

MeshLab has been used in several test cases directly coordinated by CNR. For example the Madonna di Pietranico work described in Table 5.3. Assembly of fragmented artefacts scanning of Michelangelo's Pietà done at Galleria dell'Accademia museum; scanning of architectural scene done at S. Gimignano, Pisa and Florence). These test cases allowed us to test the features and performance of the tool on highly complex application scenarios.

Training

MeshLab was extensively used in ACOFORM training initiatives.

Watermarking of 3D meshes

The watermarking tool has been integrated within MeshLab plug-in and appears in the filter menu. This has been done according to the guidelines for software development. Such a processing tool is composed of two basic parts: an embedder and a detector. The embedder takes as input the to be watermarked 3D mesh, the watermark parameters and other settings such as power, false alarm probability and so on, and gives as output the watermarked 3D mesh. On the other side, the detector takes the to be checked 3D object (supposed watermarked) and the watermark parameters, and gives as output a Boolean answer (e.g. the 3D mesh contains or not the searched watermark). The input data formats are all those that MeshLab supports such as 3Dio, STL, Stanford Polygon, VRML 2.0, etc.

At the end of the second year project such a tool presents a sufficient degree of effectiveness with respect to the expected requirements like robustness, making watermark unperceivable and secure.

The publications produced (T5.1.7, T5.1.8) are part of a general analysis carried out within this project in the scientific sector of data integrity and falsification, which are fundamental in the field of multimedia for cultural heritage, multimedia forensics and security where watermarking algorithms are positioned.

Integration with 3D sampling devices

The integration of the sampling devices is still in progress, but will be fully demonstrated and debugged when those tools will be delivered (planned delivery in the year 4).

Concerning the ARC 3D platform, improved management of point cloud raw dataset is being included in MeshLab. This is done by working on different streams: (a) adding new specific features in MeshLab and (b) by designing an algorithm for creating a complete model of the data that could be used also directly on the server. In the second stream, the idea is to generate meshes at the ARC 3D server side. The algorithm aims to give an automatic implementation of the ARC 3D task 10.1. The algorithm takes a number of depth maps as input, cleans them and merges them into a single point cloud. This point cloud is then used as input to the Poisson reconstruction algorithm to create a watertight mesh. Finally, reductions, i.e. when the images have enough overlap and are not too noisy, are performed. When the image shooting instructions are followed, these constraints should be satisfied. An example of a reconstruction obtained by this method is shown in the following.

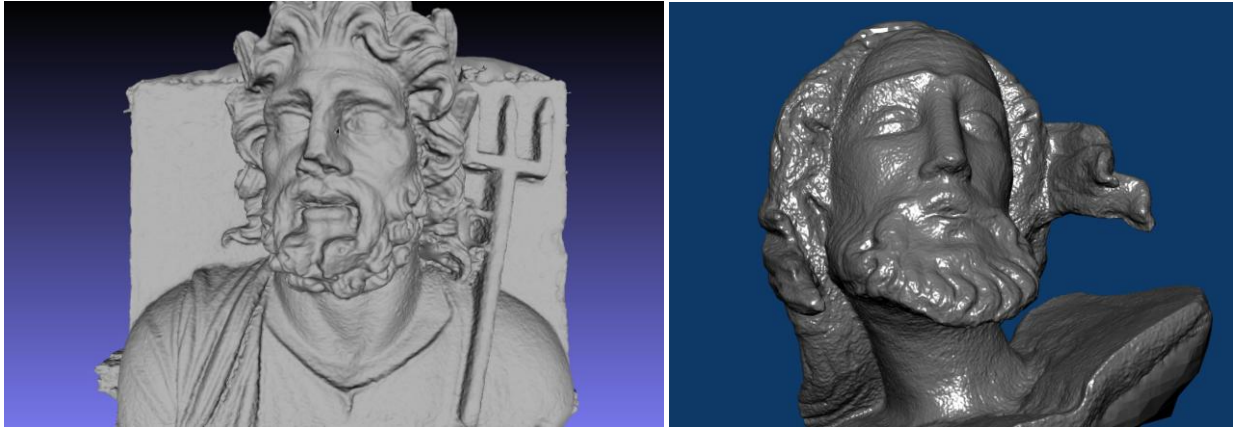


Figure1. Some examples of meshes produced by the new reconstruction algorithm that can be added to the ARC 3D server.

3.2 Synthetic description of partners contributions

Contributions of partners to task 5.1 activities and results has been as follows:

- < CNRISTI: contributed to task 5.1 with the design of extensions of the tool and with maintenance and bug fixing; contributions to task 5.2 was on surface completion tool and basic mesh curvature filters.
- < MICC: porting of the watermarking filter to the MeshLab platform
- < KUL: implementation and evaluation of an improved reconstruction pipeline that could be added to the ARC 3D server.
- < Spheron: integration of its forthcoming device with MeshLab. Integration is done via an intermediate file that transfers geometry, texture and provenance data.
- < Breuckmann: design of the new scanning device and on its integration with MeshLab

3.3 Deviation from work plan

No deviations from the work plan have been registered for Task 5.1.

3.4 Plans for the next period (adaptations to the work plan of the next period)

The activity will proceed according to the original plan. Major results expected are:

- < New versions of MeshLab will be delivered during the next year, a new version delivered as soon as a sufficient number of new features and improvements (bug fixes, redesign of interface) will be finalized. We will try to keep the same frequency of new versions produced in 2009 (approximately, an improved version every four months).
- < Watermarking filter: fine tuning and bug fixing will be carried out and at the end of the third year a new version will be released. MeshLab plugin
- < Progress in the development of the integration of the sampling Meshtool with
- < We will evaluate the possible integration of the automatic reconstruction ARCAD in the server; but this will not replace the MeshLab plugin, since in most acquisition projects manual cleaning of the raw data and sophisticated processing will be required to produce good quality results.

4 Task 5.2 Methods for shape analysis

4.1 Activities and results in Year 2

Objectives of Task 5.2 are: to design user analysis and geometry based segmentation; to design a user-driven tool for completing sampled representations; to design new methods for LOD encoding / rendering of CityEngine models. The activity of the first year of the project focused mostly on the second and third objectives, finalizing the design of a tool based on a approach for closing holes on 3D scanned models. Conversely, the activity of the second year covered all three objectives.

Shape Analysis component

The objective of the Shape Analysis component for the second period of the project was to implement the functional specification defined during the first period (documented in the deliverables D3P3 First Year Report and D5WP5 First Year Report). Therefore, the basic infrastructure should be implemented and the first level of hierarchical manual segmentation should be supported.

The basic hierarchical segmentation was implemented, based on manual segmentation, such that user can define boundaries, which are automatically closed (following the shortest path or the minimum curvature) and then he can select the regions, which can further be segmented. The basic data structures for representing meshes and computing (based on quadric fitting) as well as for querying and traversing the neighborhood information from different point of view were successfully developed and tested by the developers. Additionally, the manual segmentation capabilities were implemented as a plugin, such as it can be employed in the Integrated Viewer/Browser (IVB) for redlining (see Figure 2) and selecting areas of interest, which could afterward be annotated, seeking always for a very intuitive and simple user interaction dialog. This was implemented according to the plugin system of the IVB (see Deliverable D7.2 WP7 Second Year Report) and supporting OpenSG, in order to ease the integration within COFORB tools. In order to explore the capabilities of our tool, a testing phase was conducted with a coin coming from an acquisition process, based on Shifted Structured Light [5.2.4] for reconstructing fine details of objects (resolution down to 55 micron), as the coin displayed in the following image.

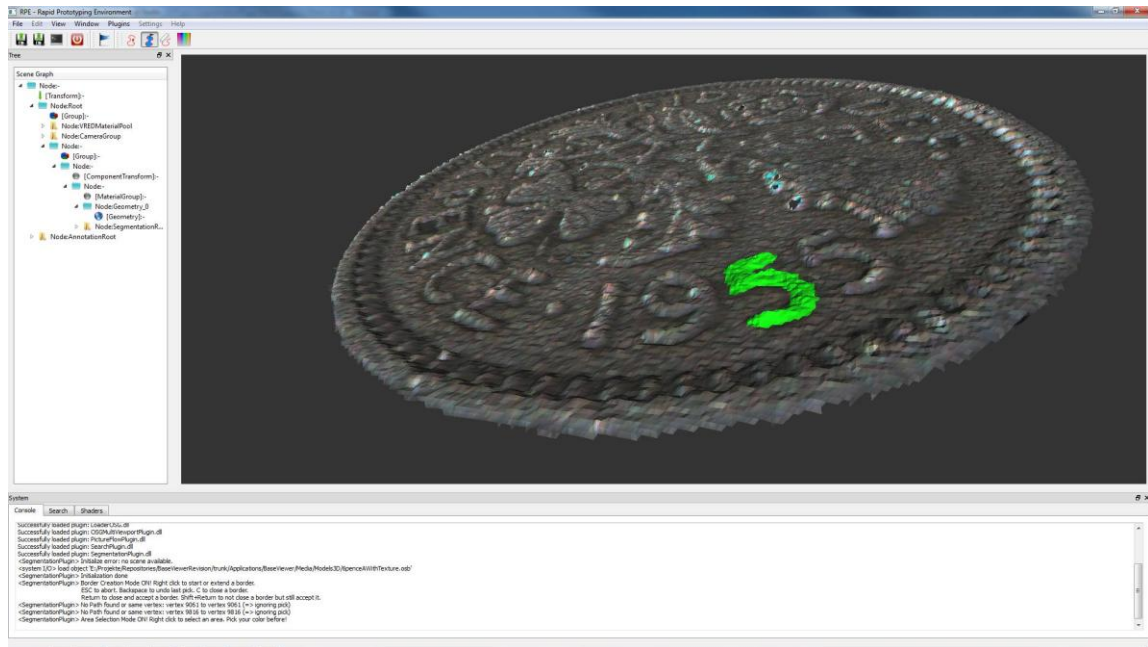


Figure2 Example of a redlining operation on a 3D mesh.

The segmentation process consists of two steps:

- < Generate borders
- < Select regions

These two functions can be used in any arbitrary order. Thus, after selecting some regions additional borders can be added to select different regions, or the other way around. Overlapping borders are tracked as well, in order to be able to create intersections between different regions.

Generating borders the user can pick points on the mesh and the points are interconnected through existing mesh edges to generate a border. The connection of two picked points is calculated by finding the shortest path among mesh edges. Special attention has been drawn to usability issues (navigation is possible while defining a contour), in order to achieve an intuitive generation of borders. Figure 3 shows the process of defining some borders on a 3D mesh.

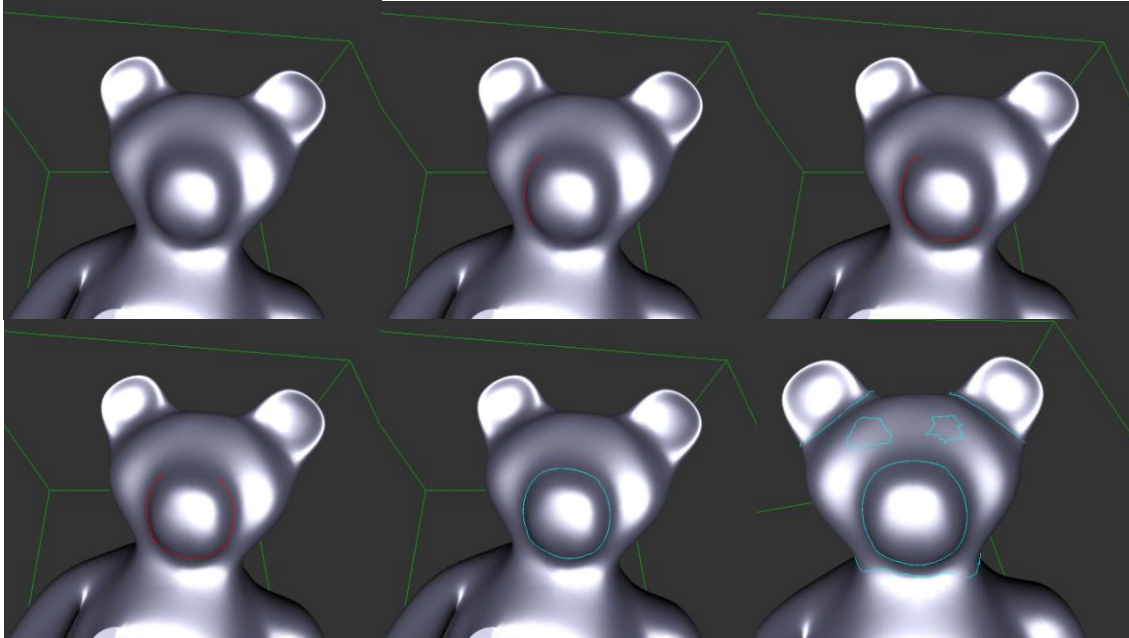


Figure 3. Example of generating borders on a teddy within several points only. The current border is visualized in red while other existing borders are blue.

Selecting regions the user can select a colour from a colour table and then pick a point on the mesh. A region growing algorithm is applied using as a seed the picked point, which highlights triangles until a border is reached. The border is visualized with a thick line in a slightly darker colour.

Since several borders can be defined, arbitrary regions with several independent borders can be selected. In other words a region can be defined by a set of borders and borders can be used by many regions. For example, the region on the arm of the teddy (Figure 4) consists of three separate borders. Overlapping borders are tracked too, in order to allow the user to generate regions at their intersections. Regions can be coloured, and selected or not selected according to the user's needs.

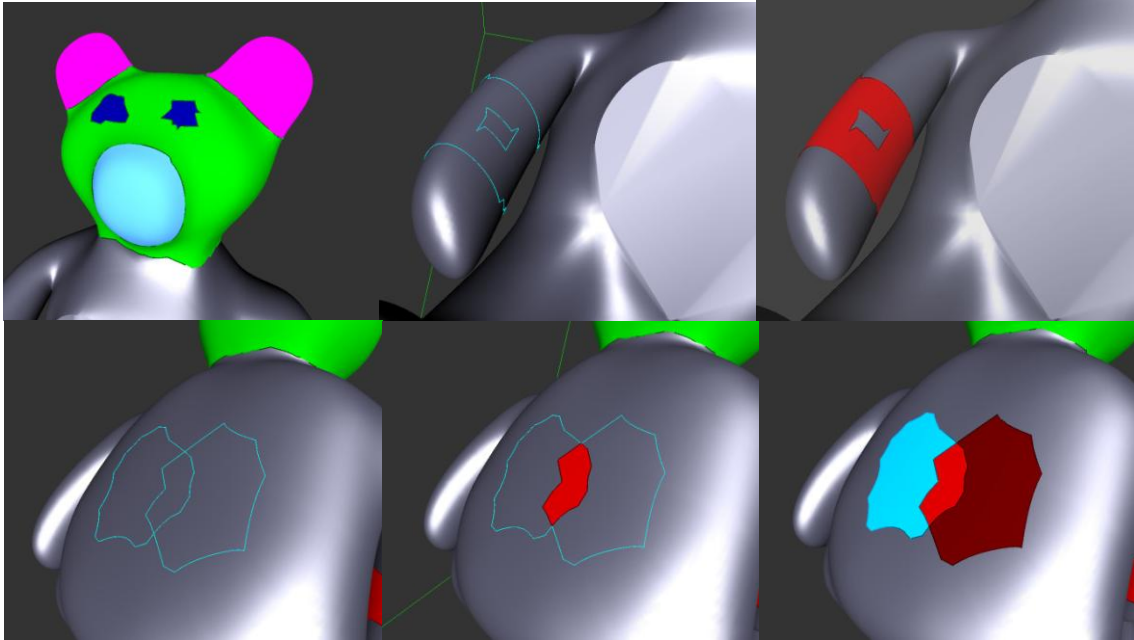


Figure 4. Examples of different regions, created according to different combinations of selected borders.

Some activity concerned also the extension of ~~the~~ ~~its~~ ~~included~~ ~~MeshLab~~ ~~and~~ ~~in~~ ~~the~~ ~~underlying~~ ~~graphics~~ ~~library~~ ~~(~~ ~~VCGLib~~ ~~)~~ ~~to~~ ~~support~~ ~~shape~~ ~~analysis~~ ~~computations~~. We have extended the basic features ~~MeshLab~~ concerning curvature estimation adding new techniques for both estimating curvature in a more geometrically robust way and interactive techniques to drive selection of portion of mesh according to a function defined over these values according to user's choice (see Figure 5). In this way the user can define in a very flexible way how to detect a given portion of the mesh according to multiple combined values (curvature, visibility, etc).

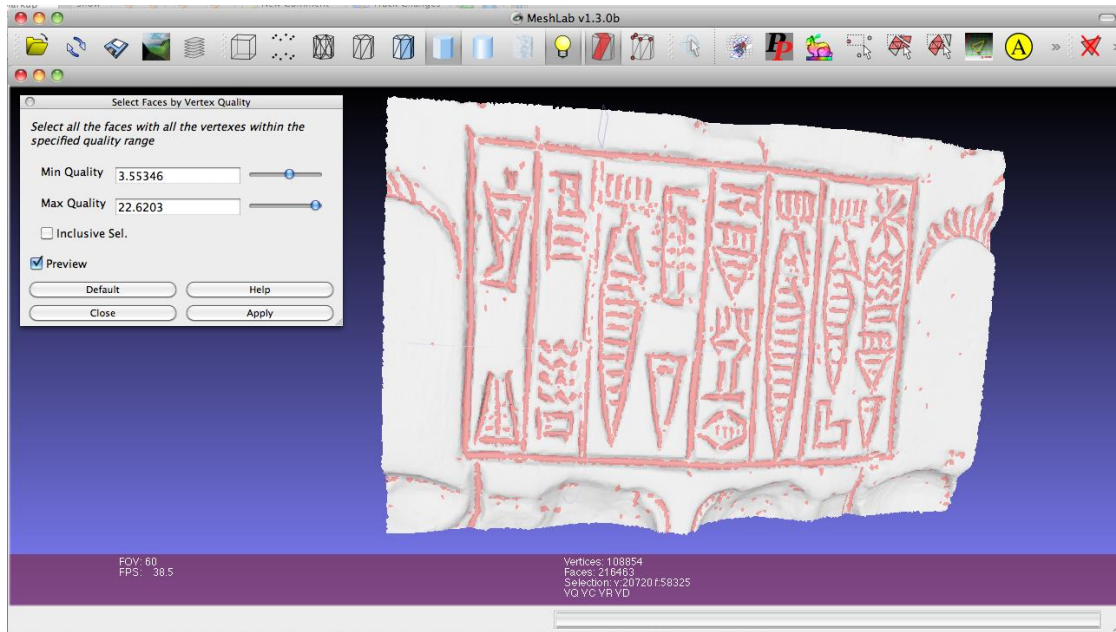


Figure 5. Mean curvature controlled interactive selection of the inscription. The user can change the curvature threshold used to segment the pit portions of the inscription morphological operators (erosion/dilation) can be further applied to clean the segmented

Tools for completing sampled representations

The second objective of task 5.2, completing sampled representation, has some apparent similarity with the work done in Task 5.3. It is therefore important to underline here that the goal of this activity in 5.2 is to select structured regions in a sampled model that need to be completed (since 3D scanning usually produces incomplete sampling of complex surfaces) and, after selection, to propose geometries that complete plausibly those unsampled regions. Therefore, the task has some similarity with the activity in task 5.3 (for example, a similar user-driven sketch-based approach is adopted and implemented for the selection of proper surface regions) but the purpose and the geometry processing performed is completely different.

The work has progressed in this task with the development of an assisted tool that allows the user to detect elementary architectural elements contained in the sampled data (e.g. columns on a facade of a building). A user-assisted sketch-based framework was designed (see Figure 6) to extract high-level primitives (e.g. columns or staircases) from scanned 3D models of structured artworks (architectures). The framework offers a unified level of representation of primitives, so that new types of primitives can be easily added to the main engine. Primitives are fitted with a user-assisted procedure: the user suggests the approximate location of the primitive by means of

mouse gestures, sketched over a rendered model. The viewpoint that was selected prior to the sketching is also taken into consideration as hints on the orientation and size of the primitive. The engine performs a GPU assisted fitting and the result is shown in real time to the user. As a result, the system can add and fit groups of primitives (e.g. a column complex, or a sequence of windows). This tool is described in detail in paper [T5.2.3].

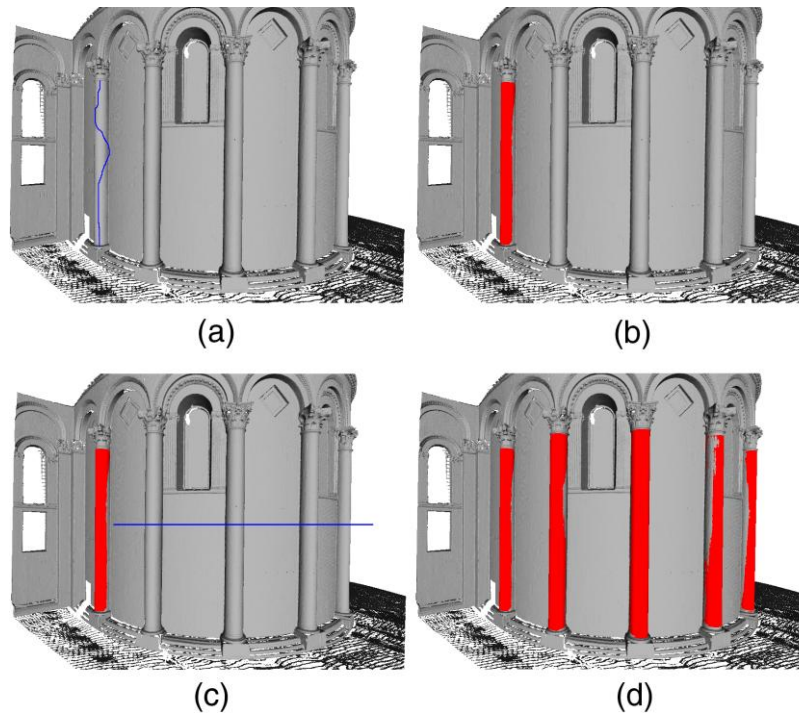


Figure 6. An example of sketch-based selection of a primitive, fitting and selection of the similar components.

CityEngine Semantic LoD Rendering

In general, complex 3D models of cities and buildings (e.g. ancient Pompeii or Rome in the context of 3DCOFORM) need to be simplified in order to enable efficient rendering. The basic idea is to cull away details which are too small to be visible (below pixel size) and hidden and slow down transmission and rendering without contributing to the perceived images. Established mesh decimation techniques (see Figure 7) are usually not suitable for building models relevant to 3DCOFORM as they (1) do not have the necessary topology (these models consist of many disconnected meshes) and (2) tend to destroy architecturally relevant building parts.

Figure 7. Traditional mesh decimation algorithms tend to destroy architectural models. This example has been produced with a standard vertex clustering technique.

In Year 2 we have worked on two designs to tackle the level of detail challenge for procedurally generated city models:

1. Explicit creation of low polygonal models from mesh models based on geometry, mesh hierarchy and semantic information.
2. Direct rendering of grammar based model descriptions, generating as much detail as is visually needed.

Approach 1: Creation of low polygonal models:

The idea of the first approach is to use the geometrical, hierarchical and semantic information (produced by grammar based modelling system to segment the models and replace expensive parts with simpler primitives. This approach is currently described in a Master Thesis [T5.2.1]. While achieving a good segmentation and simplification based on meshes only turned out to be very hard, we successfully used the graph information produced by the grammar to reorganize it into volume façade subtrees. These subtrees are then replaced by simple primitives used based on shape matching with alignment optimization.

